



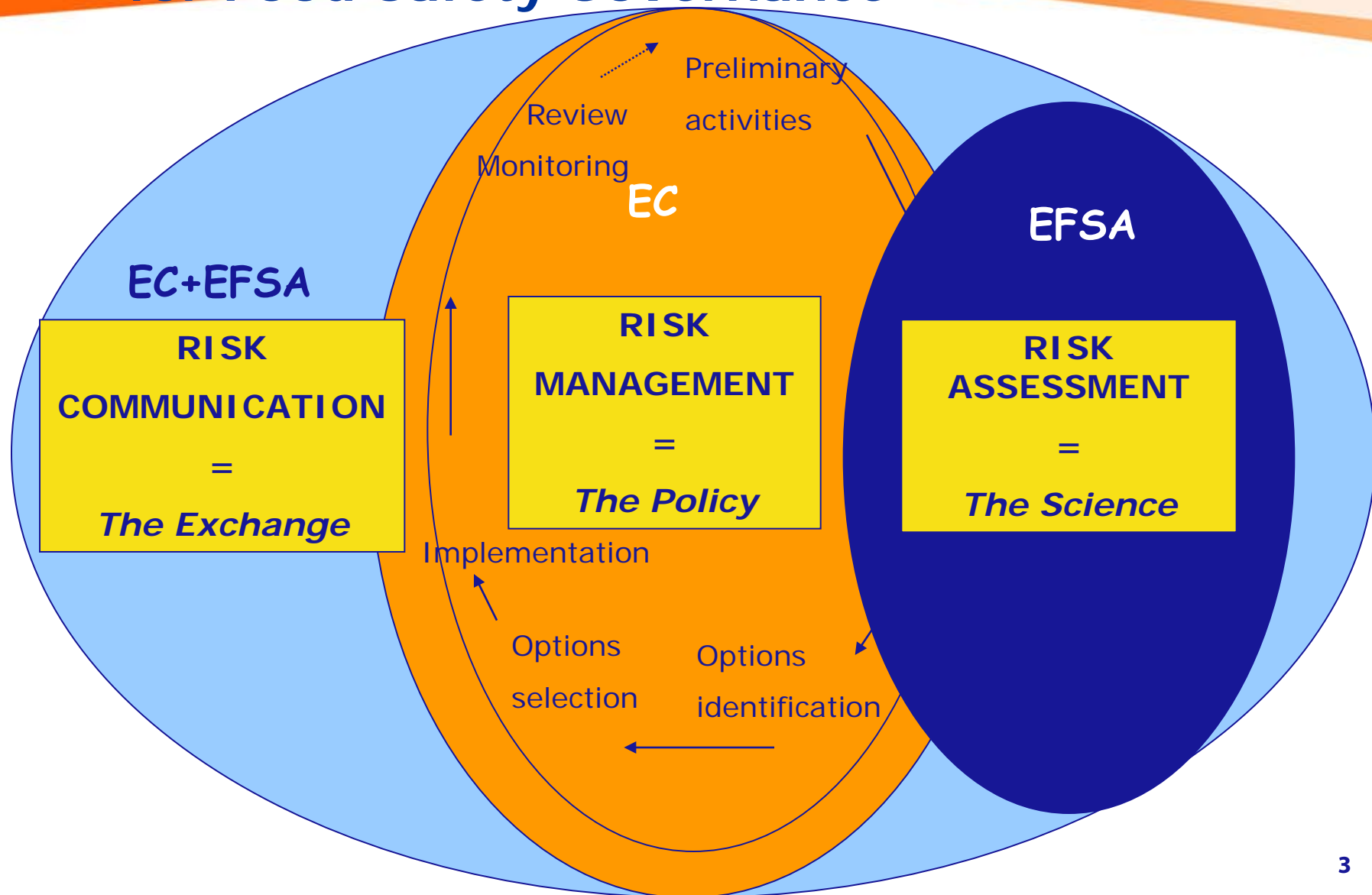
# **State of play EFSA risk assessment on meat inspection**

**II Round Table on Meat Inspection  
Brussels, 25th October 2010**

**Dr Marta Hugas  
Head of Unit  
Unit on Biological Hazards**

- Provide **scientific advice** and **scientific and technical support** for the Community's legislation and policies in all fields which have a direct or indirect impact on **Food and Feed Safety**.
- Provide **independent** information on all matters within these fields with a high level of **openness** and **transparency**;
- **Risk Communication**;
- **Collaboration and Networking**.

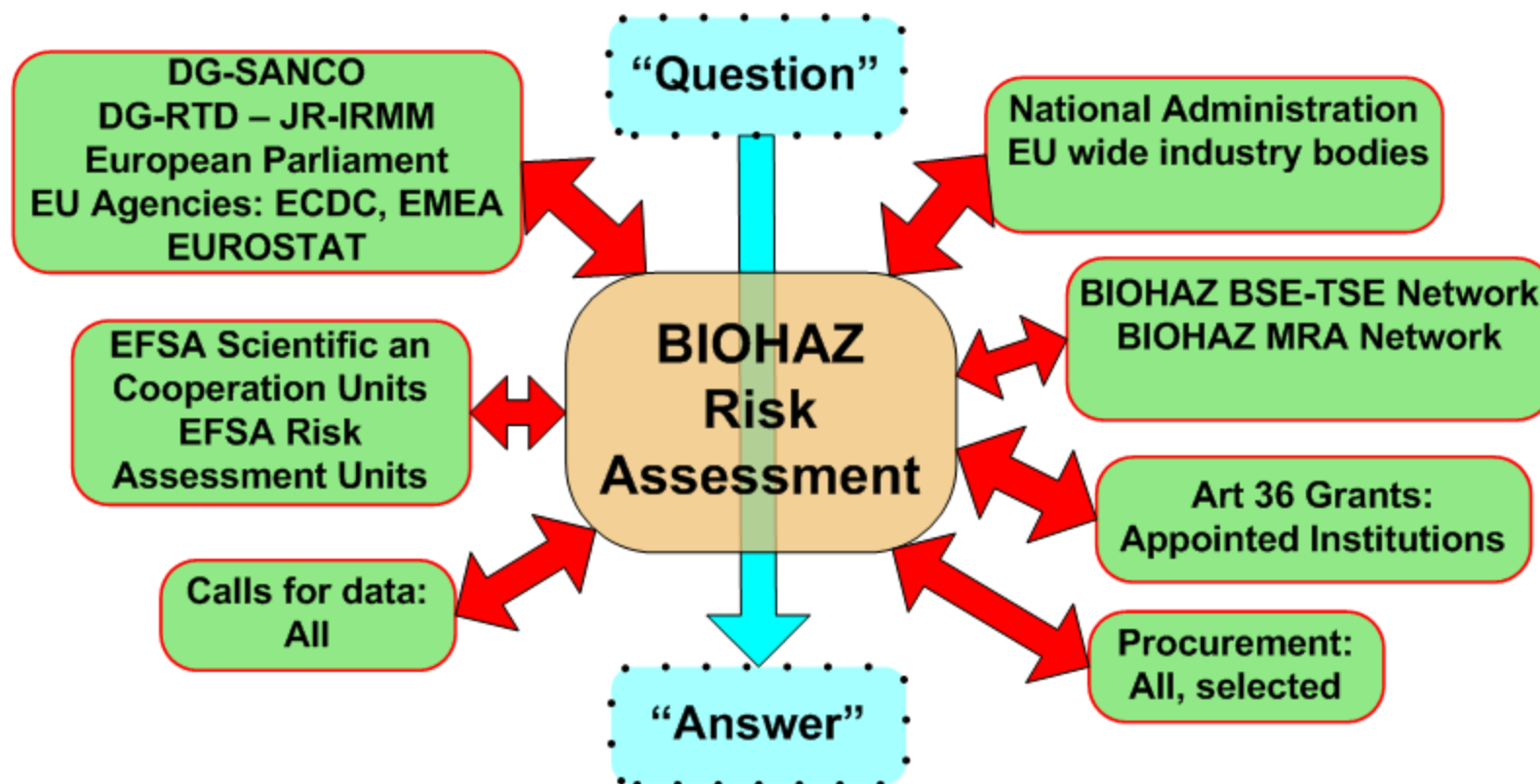
# Risk Analysis [CAC,01]: a decision paradigm for Food Safety Governance



**The Panel on Biological Hazards deals with questions on biological hazards relating to **Food Safety** and **Food-borne Diseases**, including:**

- Food-borne Zoonoses;**
- Food Hygiene;**
- Microbiology;**
- Transmissible Spongiform Encephalopathies;**
- Associated Waste Management.**

# Risk Assessment players



“Classical” Meat Hygiene Inspection



Microbiological Meat Hygiene

Specified Risk Materials controls



# **Ongoing Risk Assessments on Meat Inspection**

***“Public Health Hazards to be covered by  
inspection of meat”***

- In Nov 2008 CVO's agreed on conclusions on modernisation of sanitary inspection in slaughterhouses based on the recommendations issued during a seminar organised by the French Presidency. They were considered at a the Commission report
- Council Conclusions on the Commission report (Nov 2009) invite the Commission to prepare concrete proposals allowing the effective implementation of modernised sanitary inspection in slaughterhouses while making full use of the principle: '**risk-based approach**'
- In accordance with Article 20 of Regulation (EC) No 854/2004, the Commission shall consult EFSA on certain matters falling within the scope of the Regulation whenever necessary.

- As described, EFSA (BIOHAZ Panel) and the Commission's former SCVPH issued in the past a number of opinions on meat inspection considering separately
  - specific hazards
  - production systems
- In order to guarantee a more **risk-based approach**, it is needed:
  - an assessment of the risk caused by specific hazards, taking into account the evolving epidemiological situation in Member States.
  - In addition, methodologies may need to be reviewed taking into account
    - risks of possible cross-contamination,
    - trends in slaughter techniques and
    - possible new inspection methods.

## **Requests for scientific opinions on the hazards to be covered by inspection of meat**

# Terms of reference (Annex 1)

## SCOPE:

- To evaluate meat inspection in order to assess the fitness of the meat for human consumption
- To monitor food-borne zoonotic infections (public health)
  - without jeopardizing the detection of certain animal diseases nor the verification of compliance with rules on animal welfare at slaughter

## For the species:

- ❖ domestic swine,
- ❖ poultry
- ❖ bovine animals over six weeks old,
- ❖ bovine animals under six weeks old,
- ❖ domestic sheep and goats,
- ❖ farmed game and
- ❖ domestic solipeds

- i. Ensuring a risk-based approach**
- ii. Considering relevant international guidance (CAC, OIE)**
- iii. In consultation with ECDC**

# Terms of reference (Annex 1)

- Identify and rank the main risks for PH that should be addressed by meat inspection at EU level. General and specific biological risks as well as chemical risks (e.g. residues of veterinary drugs and contaminants) should be considered
- Assess the strengths and weaknesses of the current meat inspection methodology and recommend possible alternative methods, taking into account implications for animal health and welfare.
- Recommend additional inspection methods in case other previously not considered hazards have been identified above (e.g. salmonellosis, campylobacteriosis).
- Recommend possible alternative methods and adaptations of inspection methods and/or frequencies of inspections that provide an **equivalent level of protection** within the scope of meat inspection or elsewhere in the production chain that may be used by risk managers in case they consider the current methods disproportionate to the risk.
  - e.g. based on the risks or on data obtained using harmonised epidemiological criteria. When appropriate, food chain information should be taken into account.

- Issues outside the scope of the mandate:
  - Transmissible Spongiform Encephalopathies (TSEs)
  - Issues other than those of PH significance that compromise fitness of meat for human consumption (eg. sexual odour)
  - Impact of changes to meat inspection procedures on occupational health of abattoir workers, inspectors, etc
  - The definition of the responsibilities of the different actors (official veterinarians, official auxiliaries, staff of food business operators) is excluded from this mandate

# Harmonised epidemiological criteria - Interpretation

## Original wording from CVO conclusions:

EFSA and ECDC should establish the criteria or the quantitative data necessary for MS to carry out a risk analysis allowing the adaptation of the general inspection methods provided by the legislation

## Interpretation:

For each hazard, the relevant epidemiological indicators (e.g. prevalence, incidence, risk factors such as production systems etc) and other data to be used by MS to carry out a risk analysis to support decisions on adaptation of meat inspection methods or practices

## Alternative wording proposed:

Harmonised epidemiological indicators

**Requests for technical assistance defining  
harmonised human health epidemiological  
criteria to carry out risk analysis within the scope  
of meat inspection**

# Terms of reference (Annex 2)

## SCOPE:

- technical assistance on harmonised epidemiological indicators for specific PH hazards in food and animals to be used by risk managers in case they consider the current methods for meat inspection address the relevant risk not adequate
- Where possible, such epidemiological indicators should be based on monitoring activities already laid down in European Union provisions, in particular in Regulation (EC) No 882/2004, Regulation (EC) No 2160/2003, Regulation (EC) No 852/2004, Regulation (EC) No 853/2004, Regulation (EC) No 854/2004 and their implementing acts.

## For the species:

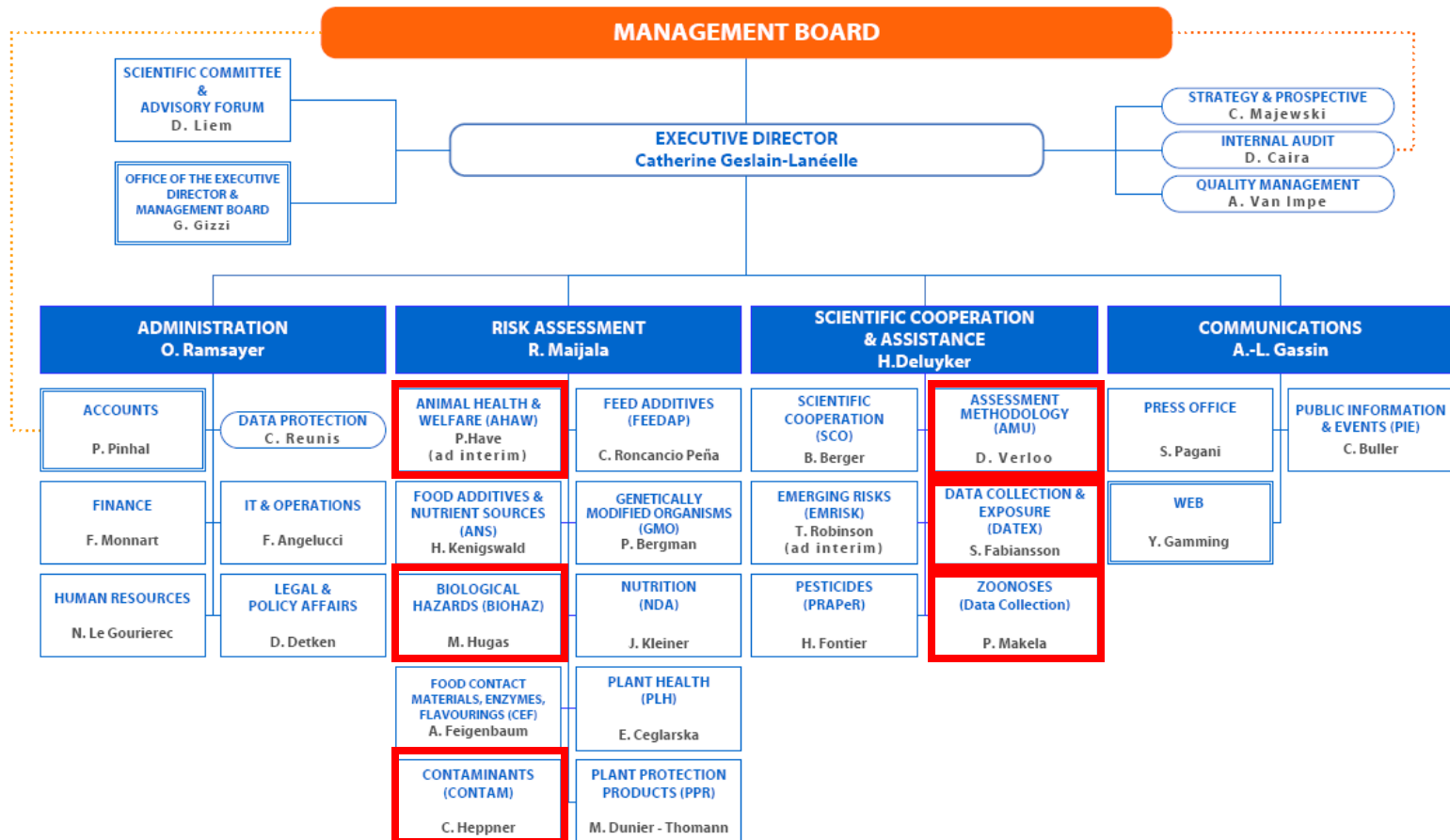
- ❖ domestic swine,
- ❖ poultry,
- ❖ bovine animals over six weeks old,
- ❖ bovine animals under six weeks old,
- ❖ domestic sheep and goats,
- ❖ farmed game and
- ❖ domestic solipeds

# Terms of reference (Annex 2)

- Define **harmonised epidemiological indicators** (e.g. prevalence, status of infection, production systems) for specific hazards already covered by current meat inspection (trichinellosis, tuberculosis, cysticercosis, ...) and for possible additional hazards identified in a scientific opinion on the hazards to be covered by inspection of meat (see Annex 1), which can be used to consider adaptations of meat inspection methodology.
- Provide a summary of comparable data from Member States based on the above defined harmonised epidemiological criteria, if existing, e.g. from ongoing monitoring in humans, food or animals.
- Recommend methodologies and minimum monitoring/inspection requirements to provide comparable data on such harmonised epidemiological indicators, in particular if comparable data are missing.

- Integrated answer:
  - EFSA statement: approach taken and state-of-the art of meat inspection in the EU
  - 1 opinion and 1 report/species
- In each opinion:
  - Chapters from BIOHAZ Panel
  - Chapter from AHAW Panel
  - Chapter from CONTAM Panel in collaboration with DATEX Unit
  - Overall conclusions and recommendations
- In each report:
  - Work from Zoonoses Monitoring Unit in collaboration with Assessment Methodology Unit

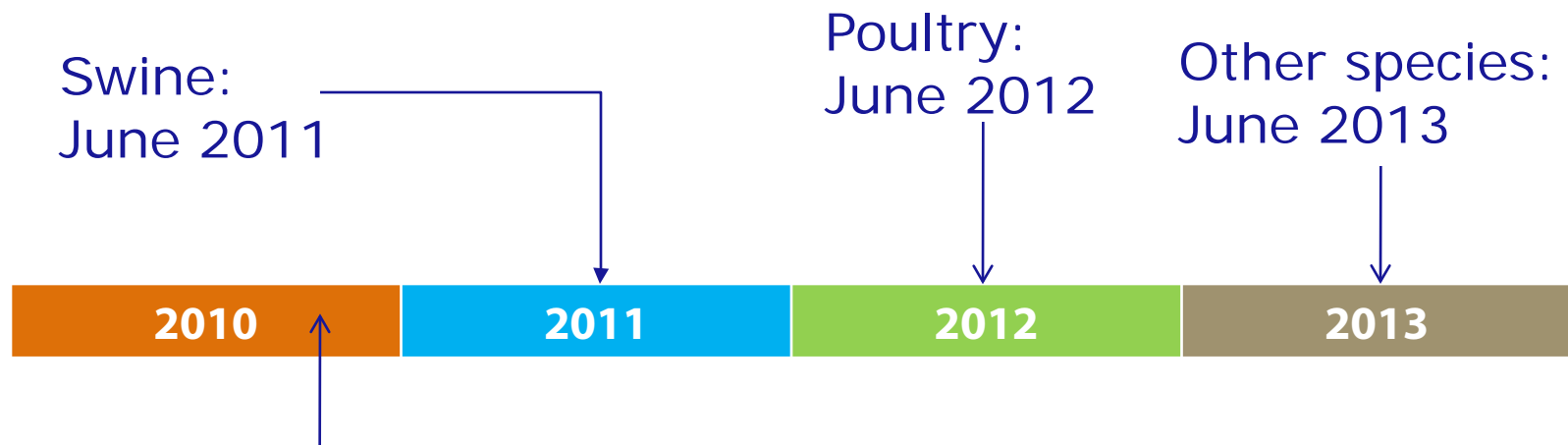
# EFSA's organisational structure



Organisational chart 2009

# Timelines for the mandates

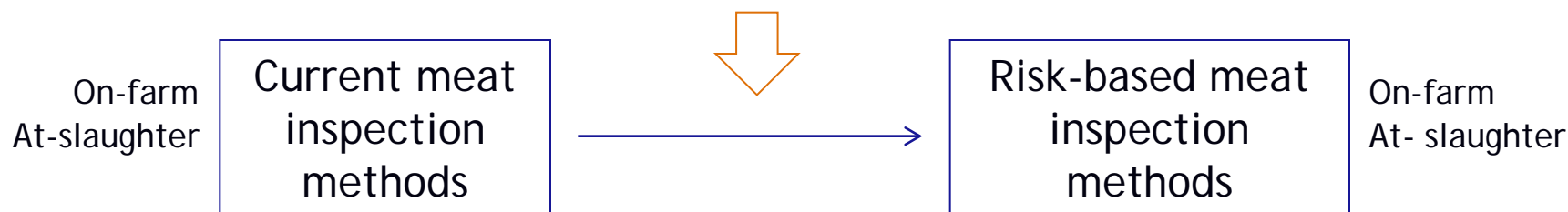
## Deadlines



1. State-of-the art of Meat inspection practices in the EU  
(Unit on Biological Hazards)
2. Meat Inspection and implications for AHAW  
→ *Procurement procedure (Open call)*  
(Unit on Animal Health and Welfare)
3. Support on technical assistance on epidemiological criteria  
(Unit on Zoonoses Data Collection)

## Implications of meat inspection mandate on AHAW

*Suggested changes in the light of public health risks*  
*[BIOHAZ, CONTAM]*



*Given the need for equivalent achievement of objectives, what are the implications for:*

- *animal disease monitoring/surveillance (other than food borne zoonoses), and*
- *compliance with rules on animal welfare?*
- *Key issue: Cooperation/synergy with other EFSA panels/units*

## The target of the contract is:

- collection of relevant data
- implementation of models
- to assist AHAW Panel and its WG to:

Estimate the effectiveness of monitoring and surveillance (with respect to AHAW) of both meat inspection and the overall surveillance system, both:

- In the current legislation
- following suggested system changes

Outsourcing activities made to support the report on technical assistance on epidemiological criteria:

1. Contract on assistance in descriptive and statistical analyses of surveillance and monitoring data on zoonotic agents related to public health hazards to be covered by meat inspection;
2. Contract on literature searches for data on some zoonotic bacteria and parasites in humans, food and animals

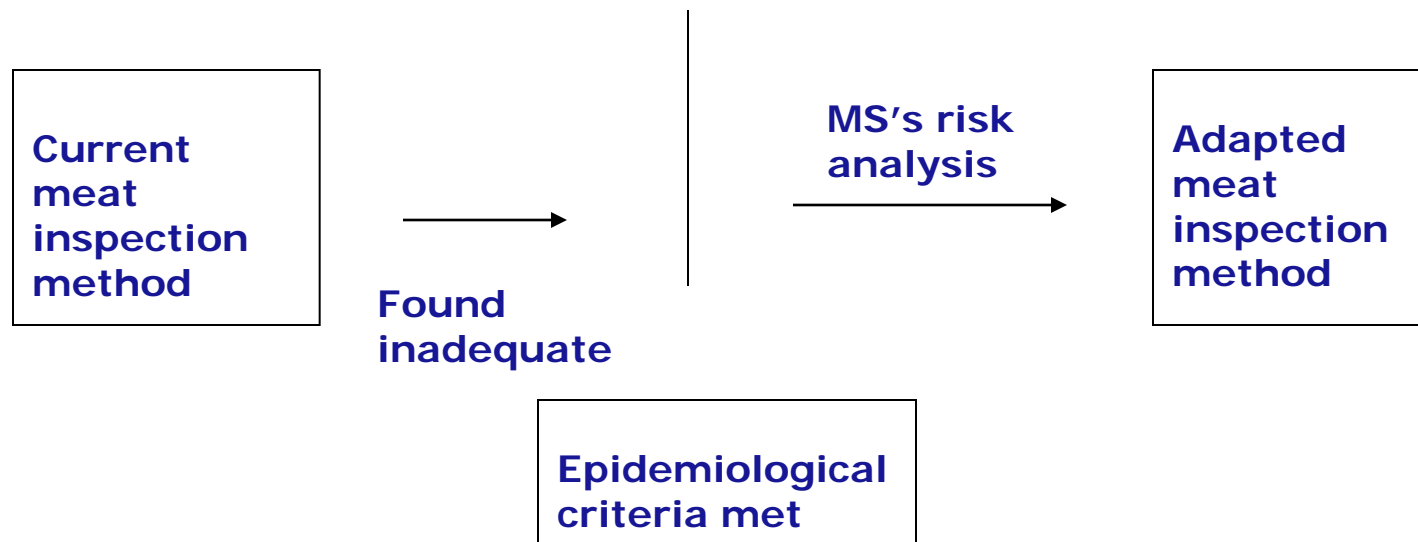
*Launched by the **Zoonoses Data Collection unit***

*Both contracts will be signed in the coming weeks*

# Schema for the epidemiological criteria

## – EFSA call for outsourcing

- The application of the epidemiological criteria is understood to work as follows :



- EFSA will provide the stage of meat chain and the harmonised monitoring requirements for the criteria, while the Commission will set the threshold

# List of dataset needs I (Zoonotic hazards)

Data collected within the annual data collection in accordance with the Directive 2003/99/EC on monitoring of zoonoses

Data from years 2004-2010 (sometimes from years 1994-2003) regarding all animal species mentioned earlier and for the following items:

*Salmonella*

*Campylobacter*

*Yersinia*

Verotoxigenic *Escherichia coli*

*Listeria monocytogenes*

Zoonotic Mycobacteria

*Brucella*

*Trichinella*

*Echinococcus*

*Toxoplasma*

*Cysticercus*

*Sarcocystis*

Food-borne outbreaks

Animal populations

Antimicrobial resistance in:

- *Salmonella*, *Campylobacter*, indicator *E.coli* and enterococci, MRSA

# List of dataset needs I (Zoonotic hazards)

## Data collected in the framework of the EU-wide baseline surveys on zoonotic agents

Data from the following baseline surveys:

- *Salmonella* in slaughter pigs and holdings of breeding pigs
- *Salmonella* in flocks of broilers and flocks of turkeys
- *Campylobacter* and *Salmonella* in broilers and broiler meat
- MRSA in holdings of breeding pigs

# Conclusions

- EFSA in its role as risk assessment body in the EU, provides scientific advice and scientific and technical support for legislation and policies in all fields which have a direct or indirect impact on food and feed safety.
- EFSA's scientifically based risk assessments serve as a means for the identification of food safety risk control options, which are then reflected in EU legislation.
- EFSA applies an integrated approach in its reply to the request received by the EC
- Current meat inspection mandate: complex due to the number of species to be assessed and the different expertise required (6 EFSA Units involved + Outsourcing)
- Data availability is "key" in providing the most useful answer to the EC request

# Thank You !!!

**EFSA is committed to:**

**Excellence,  
Independency,  
Responsiveness and  
Transparency**

**[www.efsa.europa.eu](http://www.efsa.europa.eu)  
[BIOHAZ @efsa.europa.eu](mailto:BIOHAZ@efsa.europa.eu)**

Thanks to EFSA colleagues: Franck Berthe, Claudia Heppner, Pia Makela, Didier Verloo, Stefan Fabianson 29